

## PE/Cyanine7 Anti-Human/Monkey CD2 Antibody[RPA-2.10]

Catalog Number: E-AB-F1375H

Note: Centrifuge before opening to ensure complete recovery of vial contents.

### Description

|                                |  |
|--------------------------------|--|
| <b>Reactivity</b>              | Human;Rhesus   |
| <b>Host</b>                    | Mouse  |
| <b>Isotype</b>                 | Mouse IgG1, κ  |
| <b>Clone No.</b>               | RPA-2.10   |
| <b>Isotype Control</b>         | PE/Cyanine7 Mouse IgG1, κ Isotype Control[MOPC-21] [Product E-AB-F09792H]  |
| <b>Conjugation</b>             | PE/Cyanine 7   |
| <b>Conjugation Information</b> | PE/Cyanine7 is designed to be excited by the Blue (488 nm), Green (532 nm) and yellow-green (561 nm) lasers and detected using an optical filter centered near 775 nm (e.g., a 780/60 nm bandpass filter). |
| <b>Storage Buffer</b>          | Phosphate buffered solution, pH 7.2, containing 0.09% stabilizer.  |

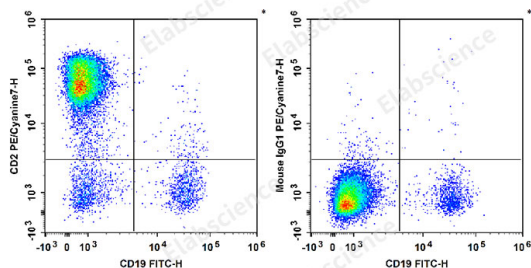
### Applications

### Recommended usage

FCM

Each lot of this antibody is quality control tested by flow cytometric analysis. **The amount of the reagent is suggested to be used 5 μL of antibody per test (million cells in 100 μL staining volume or per 100 μL of whole blood).** Please check your vial before the experiment. Since applications vary, the appropriate dilutions must be determined for individual use.

### Data



Human peripheral blood lymphocytes are stained with FITC Anti-human CD19 Antibody and PE/Cyanine7 Anti-Human/Monkey CD2 Antibody[RPA-2.10] (Left). Lymphocytes are stained with FITC Anti-human CD19 Antibody and PE/Cyanine7 Mouse IgG1, κ Isotype Control (Right).

### Preparation & Storage

|                 |   |
|-----------------|---|
| <b>Storage</b>  | Keep as concentrated solution.<br>This product can be stored at 2-8°C for 24 months. Do not freeze. |
| <b>Shipping</b> | Ice bag   |

### Antigen Information

|                        |  |
|------------------------|--|
| <b>Alternate Names</b> | Erythrocytereceptor;LFA-2;LFA-3R;T-cellsurfaceantigenCD2;T11/Leu-5 |
| <b>Uniprot ID</b>      | P06729   |

### For Research Use Only

Toll-free: 1-888-852-8623  
Web: [www.elabscience.com](http://www.elabscience.com)

Tel: 1-832-243-6086  
Email: [techsupport@elabscience.com](mailto:techsupport@elabscience.com)

Fax: 1-832-243-6017

Rev. V1.7

**Gene ID**

914

**Background**

CD2 is a 50 kD type I transmembrane glycoprotein also known as LFA-2, T11, and sheep red blood cell receptor (SRBC-R). This immunoglobulin superfamily member is expressed on thymocytes, T lymphocytes, NK cells, and thymic B cell subsets. The major ligand for CD2 is CD58 (also known as LFA-3). CD2 has also been reported to bind CD48, CD59, and CD15. CD2 plays a critical role in alternative T cell activation, T cell signaling, and cell-cell adhesion.